



37 Saw Mill River Road Hawthorne, NY 10532  
1-800-701-5463  
[info@skylinetvl.com](mailto:info@skylinetvl.com)  
[www.skylinetvl.com](http://www.skylinetvl.com)

**Safari Type:** Private Extended Safari  
**Safari Description:** 7 Days / 6 Nights – Samburu / Mt. Kenya / Nakuru / Maasai Mara

---

Tour Code: STTL 008  
Number of Travellers:  
Dates of Travel:  
Vehicle Details: Private 4 WD, Tour Guide  
Citizenship:  
Special Requests:

---

**Safari Summary:**

Day	Location	Accommodation	Meals
1	Samburu Game Reserve	Lodge / Camp	L,D
2	Samburu Game Reserve	Lodge / Camp	B,L,D
3	Mount Kenya	Lodge / Camp	B,L,D
4	Lake Nakuru	Lodge / Camp	B,L,D
5	Maasai Mara National Park	Lodge / Camp	B,L,D
6	Maasai Mara National Park	Lodge / Camp	B,L,D
7	Departure	None	B,L

---



**Tanzania Office Locations**

**Corporate Office**  
TDFL Bldg, Opp. Movenpick Royal Palm Hotel  
P. O. Box 21338, Dar es Salaam.

**Kilimanjaro Kempinski Branch**  
(Avis Rent-A-Car)

**Julius Nyerere International Airport Branch**

**Mayfair Plaza Branch**

**Mwanza Branch**

**Arusha Branch**

**Downtown Zahra Tower**

## Detailed Itinerary:



### Day 1: Samburu Game Reserve

Early departure to Northern Kenya to Samburu game reserve. Cross the equator on the way to the northern foothills of Mount Kenya, a 17,058-foot dormant volcano with a glistening cap of ice and snow. Proceed to the grassland area which forms the bridge between Kenya's lush south and parched north. Watch out for herds of impalas, grant's gazelles, and African buffalo as you enter the park. You will arrive in time for lunch followed by time at leisure. You proceed for an afternoon game drive and return to your lodge for dinner and overnight.

### Day 2: Samburu Game Reserve

At about 0630hrs, after a cup of tea or coffee, depart for an early morning game drive returning to the lodge for breakfast at 0830hrs. You will have time at leisure before leaving for an afternoon game drive at 1600hrs till dusk. Return to your lodge for dinner and overnight.



### Day 3: Mount Kenya

After break you will depart for a day tour at Mount Kenya – the second highest mountain in Africa. You will drive through the lush foothills and tea and coffee plantations around the Aberdare Mountains; and Mount Kenya to your tree hotel, where you will spend a night watching animals come to the floodlit water hole. You will arrive in time for lunch at either outspan hotel or Aberdares country club which act as the reception of the treetops hotel and the ark respectively. You will leave your luggage and continue with your overnight bag. You will also leave your drive behind and be transferred by the hotel van. Dinner and overnight at one of the tree hotel.



### Day 4: Lake Nakuru National Park

After breakfast you will check out and depart for Lake Nakuru National Park. At 1300hrs; you will make a stop in Nairobi for lunch then proceed with your drive to Nakuru, with en route game drive and later check in for dinner and overnight at your lodge.

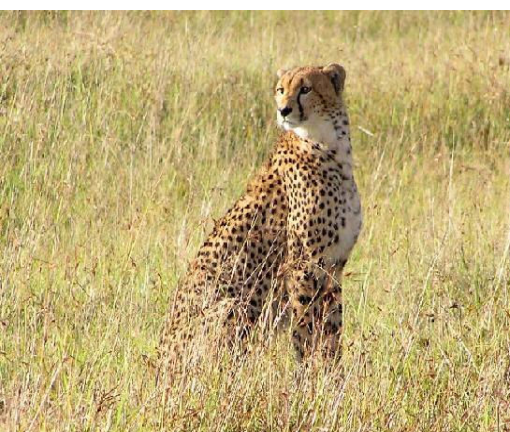


Lake Nakuru national park is renowned for its spectacular flamingo population as one of the world's greatest ornithological spectacles. Although Lake Nakuru is primarily a bird sanctuary, there are a considerable number of animals to be encountered, such as many large game animals such as zebras, elephants and gazelles; this is one of our best chances of seeing rhinos. Lake Nakuru national park was the first place in Kenya to be selected as a rhino reserve.

### Day 5: Maasai Mara National Park

0700hrs check out and depart for the famous Maasai Mara national reserve. Arrive in time for lunch followed by time at leisure.

1600hrs depart for the afternoon game drive. Return to your lodge for dinner and overnight.



The Mara is the land of African legend: lion are abundant throughout the park, as are the elephants, giraffes, and a variety of gazelle species and zebra. Cheetah and leopard are also regularly seen and, less commonly, rhino. The annual wildebeest migration, one of nature's few remaining wildlife spectacles, occurs in the Mara from July to September where the big animals and their predators are to be present



in abundance during the time frame of this trip. Several species of bee-eater, the flying rainbow that heads the list of the Mara's birds, occur in the reserve. As well as wildlife, the Maasai Mara is also home to many members of the colorful Maasai tribe who may be seen around the borders of the park - morans (warriors) loping across the plains, young boys herding goats, or elders grouped under a tree discussing matters of the day; a visit to a Maasai boma (homestead) reveals this outstanding culture and customs.

#### **Day 6: Maasai Mara**

You will have an early morning start at 0630hrs for a morning game drive, returning to the lodge for breakfast followed by time at leisure. 1300hrs you will have your lunch and later in the evening depart for an afternoon game drive till dusk and drive back to your lodge for dinner and overnight.



#### **Day 7: Departure**

0730hrs departure for Nairobi after breakfast. Lunch will be at the famous carnivore restaurant. You will later be transferred to your overnight hotel in Nairobi or to the airport for your flight back home.

**Our Commitment:**

We understand that this is once a lifetime vacation and you want to make it the most memorable and hassle free trip. Our commitment is to provide you with outstanding services from your pre-departure planning to your final departure. Once you arrive in Tanzania, the presence of our 7 office locations throughout the region can be of assistance during any time of your trip.

The itinerary provided above can be customized to fit your preferences and requirements. You can set your departure dates, length of your trip, visit location that interests you the most or any other specific requirements. With the help of our experienced safari consultants, we will guide you and plan the safari that best suits you.

**Safari Inclusions:**

- All accommodations during your safari.
- All meals during the safari (Breakfast, Lunch and Dinner), refer to first page.
- All airport transfers from arrival to departure.
- Entrance fees to all National Parks during your safari.
- Private 4WD vehicle exclusively for your group.
- Comprehensive support from our New York office for your pre-departure planning and from one of our 7 office locations in Tanzania.
- Professional and experienced English speaking driver accompanied throughout the safari.
- All Government tax and fees.
- Start and end in Nairobi.

**Safari Exclusions:**

- International and Domestic Airfares
- Laundry, Gratuities, Tips
- Entry Visa
- Travel Insurance
- Optional activities and any other extras not included in the above itinerary.