



37 Saw Mill River Road Hawthorne, NY 10532
 1-800-701-5463
info@skylinetvl.com
www.skylinetvl.com

Safari Type: Private Extended Safari
Safari Description: 8 Days / 7 Nights – Amboseli / Tsavo / Mombasa

Tour Code: STTL 009
 Number of Travellers:
 Dates of Travel:
 Vehicle Details: Private 4 WD, Tour Guide
 Citizenship:
 Special Requests:

Safari Summary:

Day	Location	Accommodation	Meals
1	Amboseli National Park	Lodge / Camp	L,D
2	Amboseli National Park	Lodge / Camp	B,L,D
3	Tsavo West National Park	Lodge / Camp	B,L,D
4	Tsavo East National Park	Lodge / Camp	B,L,D
5- 7	Mombasa	Beach Resort	B,L,D
8	Departure	None	B,L



Tanzania Office Locations

Corporate Office
 TDFL Bldg, Opp. Movenpick Royal Palm Hotel
 P. O. Box 21338, Dar es Salaam.

Kilimanjaro Kempinski Branch
 (Avis Rent-A-Car)

Julius Nyerere International
 Airport Branch

Mayfair Plaza Branch

Mwanza Branch

Arusha Branch

Downtown Zahra Tower

Detailed Itinerary:



Day 1: Nairobi - Amboseli

Depart Nairobi in the morning and drive 170 Kms towards Namanga on the Tanzania border and another 80 Kms to reach Amboseli in the early afternoon. You will view game as you proceed towards your lodge, check in at the lodge for your lunch and later in the evening depart for a game drive. You will return to the lodge for dinner and overnight.

Day 2: Amboseli National Park

You will enjoy a full day at this spectacular photogenic park. After breakfast, you will enjoy an early morning game drive, lunch, afternoon drive and over night at the lodge.



Amboseli means 'the place of water' in Maasai language. The park has an endless supply of water which is filtered through thousands of meters of volcanic rock from Mount Kilimanjaro. Animal species seen include elephant, zebra, wildebeest, giraffe, impala and leopard. The birdlife seen here includes pelican, bee eater, kingfisher, african fish eagle and pygmy falcon. Amboseli is one of the most popular parks and offers excellent accommodation facilities.



Day 3: Tsavo West National Park

You will leave soon after breakfast for Tsavo west national park this is an approximately 125 Kms stretch that will take you almost 1 ½ hours. Visit the Chyulu hills and the Mzima springs, which are favorite haunts of both the hippo and crocodile that can be seen from an underwater observation chamber. Dinner and overnight at the lodge.

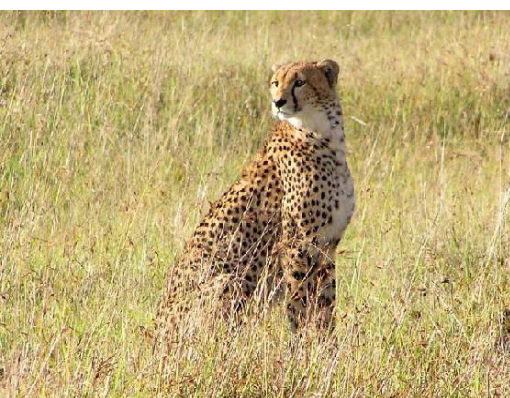


Day 4: Tsavo East National Park

Early in the morning you will drive to Tsavo East. This park is famed for its large herds of elephant covered in red dust and fine scenery. You will visit the scenic Lugards falls, Mudanda rocks (attracts elephants in the drier season) and Aruba dam. Meals and overnight at your lodge.

Day 5 – 7: Mombasa

Early morning game drive. Soon after breakfast we proceed to



Mombasa an approximately 200 Kms drive arriving there in good time for lunch in a restaurant in town. Later, transfer to your Mombasa hotel where you will enjoy a stay at the beach for three days.

Day 8: Nairobi / Departure

After breakfast, your Nairobi bound flight leaves at 9.30 am. Arrival in Nairobi will be at midday, where a natural track safari van will be waiting for you. You will then drive to the international airport for your outbound flight.

Our Commitment:

We understand that this is once a lifetime vacation and you want to make it the most memorable and hassle free trip. Our commitment is to provide you with outstanding services from your pre-departure planning to your final departure. Once you arrive in Tanzania, the presence of our 7 office locations throughout the region can be of assistance during any time of your trip.

The itinerary provided above can be customized to fit your preferences and requirements. You can set your departure dates, length of your trip, visit location that interests you the most or any other specific requirements. With the help of our experienced safari consultants, we will guide you and plan the safari that best suits you.

Safari Inclusions:

- All accommodations during your safari.
- All meals during the safari (Breakfast, Lunch and Dinner), refer to first page.
- All airport transfers from arrival to departure.
- Entrance fees to all National Parks during your safari.
- Private 4WD vehicle exclusively for your group.
- Comprehensive support from our New York office for your pre-departure planning and from one of our 7 office locations in Tanzania.
- Professional and experienced English speaking driver accompanied throughout the safari.
- All Government tax and fees.
- Start and end in Nairobi.

Safari Exclusions:

- International and Domestic Airfares
- Laundry, Gratuities, Tips
- Entry Visa
- Travel Insurance
- Optional activities and any other extras not included in the above itinerary.