



37 Saw Mill River Road Hawthorne, NY 10532
 1-800-701-5463
info@skylinetvl.com
www.skylinetvl.com

Safari Type: Private Extended Safari
Safari Description: 6 Days / 5 Nights – Amboseli / Nakuru / Maasai Mara

Tour Code: STTL 003
 Number of Travellers:
 Dates of Travel:
 Vehicle Details: Private 4 WD, Tour Guide
 Citizenship:
 Special Requests:

Safari Summary:

Day	Location	Accommodation	Meals
1	Amboseli National Park	Lodge / Camp	L,D
2	Amboseli National Park	Lodge / Camp	B,L,D
3	Lake Nakuru National Park	Lodge / Camp	B,L,D
4	Maasai Mara National Park	Lodge / Camp	B,L,D
5	Maasai Mara National Park	Lodge / Camp	B,L,D
6	Departure	None	B,L



Tanzania Office Locations

Corporate Office

TDFL Bldg, Opp. Movenpick Royal Palm Hotel
 P. O. Box 21338, Dar es Salaam.

Kilimanjaro Kempinski Branch
 (Avis Rent-A-Car)

Julius Nyerere International
 Airport Branch

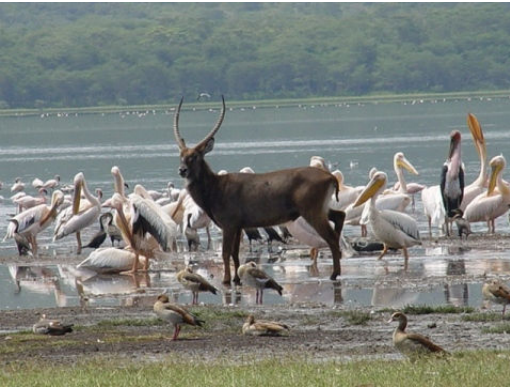
Mayfair Plaza
 Branch

Mwanza
 Branch

Arusha
 Branch

Downtown
 Zahra Tower

Detailed Itinerary:



Day 1: Nairobi - Amboseli

Depart Nairobi early morning for Amboseli National Park located at the foot of Mt. Kilimanjaro, the highest mountain in Africa. Upon your arrival, you will proceed with lunch at your lodge and an afternoon game drive in the park. After the drive, you will return to your lodge for dinner and overnight at the lodge.

Day 2: Amboseli National Park

You will enjoy a full day at this spectacular photogenic park. After breakfast, you will enjoy an early morning game drive, lunch, afternoon drive and overnight at the lodge.



Amboseli means 'the place of water' in Maasai language. The park has an endless supply of water which is filtered through thousands of meters of volcanic rock from Mount Kilimanjaro. Animal species seen include elephant, zebra, wildebeest, giraffe, impala and leopard. The birdlife seen here includes pelican, bee eater, kingfisher, african fish eagle and pygmy falcon. Amboseli is one of the most popular parks and offers excellent accommodation facilities.



Day 3: Lake Nakuru National Park

After breakfast you will proceed to lake Nakuru via Nairobi. Lunch en route followed by an afternoon game drive, dinner and overnight at your lodge or camp.



Lake Nakuru's claim to fame is anchored on its flamingo's and the over 400 species of birds found here. The lake itself is a soda lake on the floor of the rift valley. The sight of the at times millions of flamingos is quite spectacular. From a distance the lake appears ringed in pink. The lake has also earned a reputation as an important haven for endangered species- particularly the Rothschild giraffe and the black and white rhino. Lions, waterbuck, buffalo and baboons are all residents here.

Day 4: Maasai Mara National Park

After breakfast departs for Maasai Mara - the land of vast migrating animals. Arrival will be in time for lunch. After lunch embark on a game drive. Dinner and overnight at your lodge.

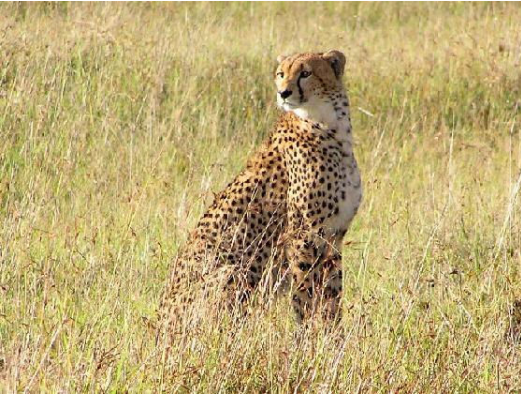


Day 5: Maasai Mara National Park

You will spend the full day exploring the great Masai Mara in search of the big 5. Morning and afternoon game drives are offered. Optional hot air balloon safari can be arranged for a minimal cost.



The Mara offers wildlife in such variety and abundance that it is difficult to believe: over 450 species of animals have been recorded here. You will easily see lions, rhinos, hippos, crocodiles, giraffe, wildebeests, zebras, buffalo, warthogs, hyenas, jackals, wild dogs, buffalo, leopard, many kinds of antelopes and elephant. It is in the Mara that perhaps the most spectacular event of the natural world takes place. This is the annual migration of millions of wildebeest and zebra from the Serengeti (Tanzania) in search of water and pasture. Following on their heels are the predators of the savanna- lion, cheetah, wild dog, jackal, hyena and vultures.



Day 6: Departure

This will be your final day on the safari where you will take a pre-breakfast game drive through the park and return in time for breakfast. Will then continue to drive back to Nairobi for your onward journey.

Our Commitment:

We understand that this is once a lifetime vacation and you want to make it the most memorable and hassle free trip. Our commitment is to provide you with outstanding services from your pre-departure planning to your final departure. Once you arrive in Tanzania, the presence of our 7 office locations throughout the region can be of assistance during any time of your trip.

The itinerary provided above can be customized to fit your preferences and requirements. You can set your departure dates, length of your trip, visit location that interests you the most or any other specific requirements. With the help of our experienced safari consultants, we will guide you and plan the safari that best suits you.

Safari Inclusions:

- All accommodations during your safari.
- All meals during the safari (Breakfast, Lunch and Dinner), refer to first page.
- All airport transfers from arrival to departure.
- Entrance fees to all National Parks during your safari.
- Private 4WD vehicle exclusively for your group.
- Comprehensive support from our New York office for your pre-departure planning and from one of our 7 office locations in Tanzania.
- Professional and experienced English speaking driver accompanied throughout the safari.
- All Government tax and fees.
- Start and end in Nairobi.

Safari Exclusions:

- International and Domestic Airfares
- Laundry, Gratuities, Tips
- Entry Visa
- Travel Insurance
- Optional activities and any other extras not included in the above itinerary.